

# Flat segmented straight branch without gasket



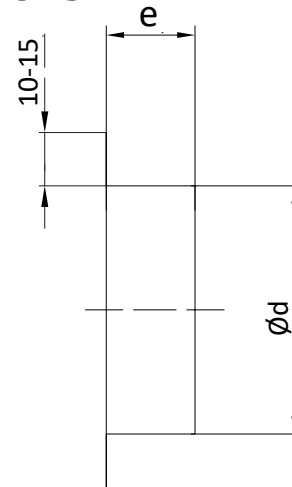
## Description

flat segmented galvanized sheet straight branches without gaskets are used for fabrication of plenum boxes in air supply diffusers, and wall-mounted and ceiling air diffusers. The sizes 63, 75 and 90 mm are prefabricated for plenum boxes installed with ducts in air distribution systems concealed beneath suspended ceiling panels or raised floors. branches can be expanded to match the joined diameter, and there are branches provided with factory-installed female ends. The branch can be fitted with a gasket; branches are provided with factory-installed EPDM gaskets on the branch.

### Available materials — Product code example

- galvanized steel sheet
- 1.4301/304 stainless steel sheet
- 316L — 1.4404/316L stainless steel sheet, molybdenum-enriched
- AW-1050A H24 aluminium sheet
- M1E z4 copper sheet

## Dimensions



Product code	Ød (mm)	e (mm)	Length L		
			40 (mm)	50 (mm)	80 (mm)
ILS-140	140	30-36	Yes	Yes	Yes
ILS-150	150	30-36	Yes	Yes	Yes
ILS-160	160	30-36	Yes	Yes	Yes
ILS-180	180	30-36	Yes	Yes	Yes
ILS-200	200	30-36	Yes	Yes	Yes
ILS-224	224	30-36	Yes	Yes	Yes
ILS-250	250	30-36	Yes	Yes	Yes
ILS-280	280	30-36	Yes	Yes	Yes
ILS-300	300	30-36	Yes	Yes	Yes
ILS-315	315	30-36	—	—	Yes
ILS-355	355	50-55	—	—	Yes
ILS-400	400	50-55	—	—	—
ILS-450	450	70-75	—	—	—
ILS-500	500	70-75	—	—	—
ILS-560	560	70-75	—	—	—
ILS-600	600	70-75	—	—	—
ILS-630	630	70-75	—	—	—
ILS-710	710	90-100	—	—	—
ILS-800	800	90-100	—	—	—
ILS-900	900	90-100	—	—	—
ILS-1000	1000	105-115	—	—	—
ILS-1120	1120	105-115	—	—	—
ILS-1250	1250	105-115	—	—	—

Tolerance: ±2 mm