

Pressed T-pieces and X-pieces



Description

Ventilation T-pieces and X-pieces are available in several types and forms, depending on the size, diameter and standard or custom dimensioning. All pieces are full-bore and provided with 90-degree branches, equal to or smaller than the main duct size. Seam welds provide a neat finish and require no additional sealing.

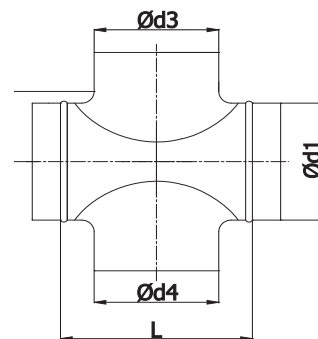
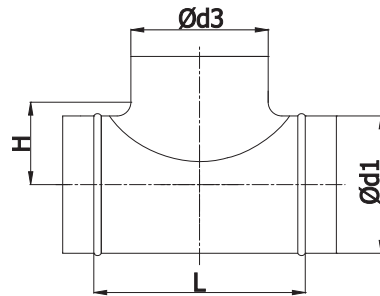
full-bore T-piece
full-bore four-way piece

1. T-piece fabricated with an SPL collar saddle, fastened to the duct with rivets and caulked at the joints.
3. T-piece fabricated with a full-size collar saddle, fastened to the bottom part with seam welds, requires no additional sealing.
4. T-piece fabricated with a SPS short segmented collar saddle, designed for non-standard duct sizes and branches sized above 400 mm.

Available materials —

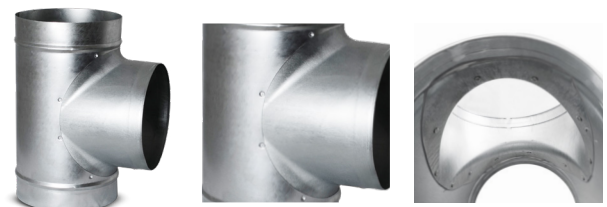
- galvanized steel sheet
- 1.4301/304 stainless steel sheet
- 316L — 1.4404/316L stainless steel sheet, molybdenum-enriched
- AW-1050A H24 aluminium sheet
- M1E z4 copper sheet

Dimensions

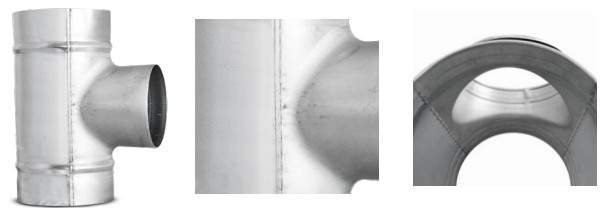


Versions

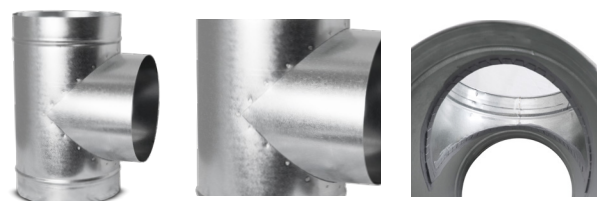
Version 1



Version 3



Version 4



Pressed T-pieces and X-pieces

Dimensions

Ød ₁ (mm)	Ød ₃ /Ød ₄ (mm)	L (mm)	H (mm)	Weight (kg)	
				TPC	XPC
80	80 ¹	140	52	0.25	0.35
100	80 ³	126	65	0.30	0.50
	100 ²	151	65	0.40	0.60
125	80 ³	146	75	0.36	0.50
	100 ³	184	78	0.46	0.70
	125 ³	184	83	0.58	0.85
140	80 ¹	140	82	0.38	0.50
	100 ¹	175	85	0.50	0.74
	125 ¹	230	90	0.65	0.96
150	80 ¹	140	87	0.42	0.52
	100 ³	175	90	0.55	0.75
	125 ³	215	95	0.68	0.98
	140 ⁴	230	95	0.70	0.99
	150 ¹	260	95	0.70	1.02
160	80 ¹	140	92	0.44	0.56
	100 ³	184	95	0.55	0.82
	125 ³	229	100	0.68	1.05
	140 ⁴	230	100	0.75	1.07
	150 ⁴	260	100	0.75	1.09
	160 ¹	229	105	0.80	1.15
180	80 ¹	140	102	0.50	0.60
	100 ¹	175	105	0.65	0.85
	125 ¹	215	110	0.77	1.08
	140 ⁴	230	110	0.80	1.10
	150 ⁴	260	110	0.80	1.12
	160 ¹	260	115	0.92	1.14
180	180 ⁴	285	115	1.06	1.45
200	80 ¹	140	112	0.55	0.66
	100 ³	175	115	0.65	0.92
	125 ³	215	115	0.79	1.17
	140 ⁴	230	120	0.83	1.20
	150 ³	260	120	0.88	1.23
	160 ³	281	125	0.95	1.45
	180 ⁴	285	125	1.15	1.64
	200 ¹	281	125	1.25	1.70

Ød ₁ (mm)	Ød ₃ /Ød ₄ (mm)	L (mm)	H (mm)	Weight (kg)	
				TPC	XPC
224	80 ¹	140	124	0.60	0.70
	100 ¹	175	127	0.78	0.98
	125 ¹	215	132	0.90	1.15
	140 ⁴	230	132	0.98	1.34
	150 ⁴	260	132	0.98	1.36
	160 ¹	260	137	1.00	1.55
	180 ⁴	285	137	1.20	1.74
	200 ¹	346	137	1.25	1.83
	224 ⁴	346	137	1.46	2.06
250	80 ¹	156	137	0.73	0.96
	100 ³	175	140	0.83	1.17
	125 ³	220	145	0.90	1.27
	140 ⁴	230	145	1.12	1.50
	150 ³	255	145	1.12	1.53
	160 ³	256	150	1.19	1.70
	180 ⁴	306	150	1.40	2.00
	200 ³	306	150	1.40	2.05
	224 ⁴	350	150	1.60	2.40
	250 ¹	307	150	1.77	2.50
280	80 ⁴	156	152	0.80	1.15
	100 ⁴	175	155	0.93	1.27
	125 ¹	220	160	1.05	1.40
	140 ⁴	230	160	1.20	1.68
	150 ⁴	255	160	1.20	1.70
	160 ⁴	256	165	1.28	1.84
	180 ⁴	306	165	1.45	2.00
	200 ¹	306	165	1.50	2.05
	224 ⁴	350	165	1.64	2.35
300	80 ⁴	156	162	0.90	1.40
	100 ⁴	175	165	1.00	1.42
	125 ¹	220	170	1.07	1.50
	140 ⁴	230	170	1.25	1.77
	150 ⁴	255	170	1.25	1.80
	160 ⁴	256	175	1.35	1.98
	180 ⁴	306	175	1.55	2.15
	200 ¹	306	175	1.58	2.20
	224 ⁴	350	175	1.73	2.46
	250 ¹	350	175	1.94	2.60

Pressed T-pieces and X-pieces

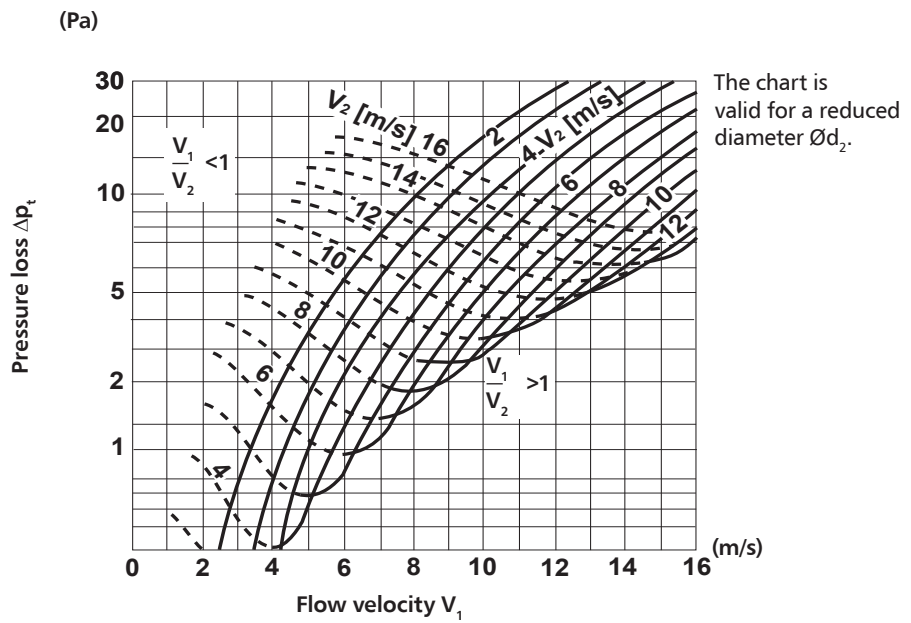
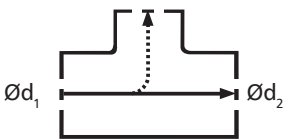
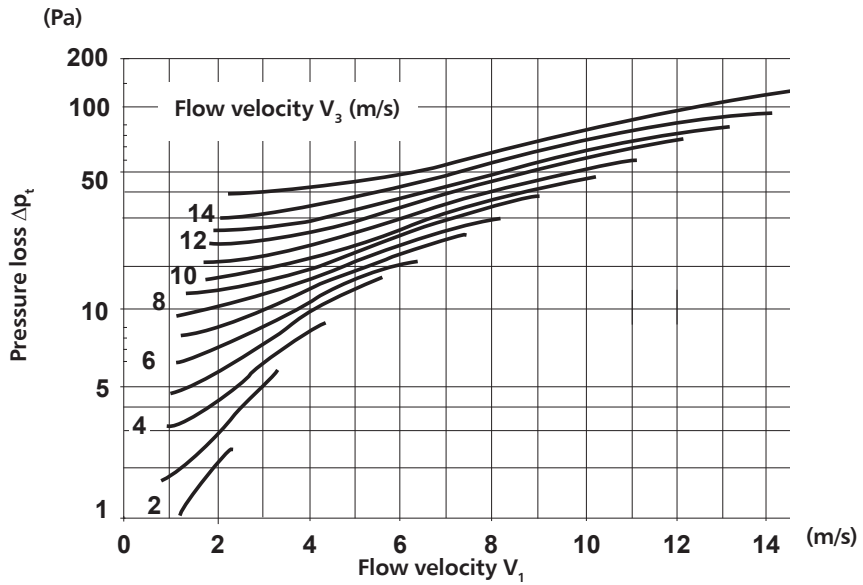
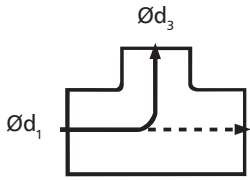
Dimensions

Ød ₁ (mm)	Ød ₂ /Ød ₄ (mm)	L (mm)	H (mm)	Weight (kg)	
				TPC	XPC
315	80 ⁴	156	170	1.00	1.41
	100 ⁴	175	173	1.02	1.43
	125 ¹	220	178	1.10	1.53
	140 ⁴	230	178	1.35	1.62
	150 ⁴	250	178	1.35	1.65
	160 ⁴	256	182	1.35	2.00
	180 ⁴	306	182	1.62	2.22
	200 ¹	306	182	1.65	2.26
	224 ⁴	350	182	1.80	2.55
	250 ¹	350	182	1.95	2.67
	315 ¹	390	182	2.80	3.66
355	100 ⁴	175	193	1.32	2.00
	125 ⁴	220	198	1.45	2.10
	160 ⁴	256	203	1.70	2.25
	200 ⁴	306	203	2.10	2.75
	224 ⁴	350	203	2.36	3.10
	250 ⁴	350	203	2.45	3.20
	315 ⁴	455	203	3.10	4.20
400	100 ⁴	175	215	1.80	2.20
	125 ⁴	225	220	1.90	2.40
	160 ⁴	266	225	2.20	2.80
	200 ⁴	300	225	2.60	3.20
	224 ⁴	350	225	2.80	3.60
	250 ⁴	350	225	3.00	3.75
	315 ⁴	415	225	3.55	4.38
400 ⁴	500	225	4.60	5.90	
450	125 ⁴	225	245	2.65	3.30
	160 ⁴	266	250	3.00	3.70
	200 ⁴	300	250	3.50	4.20
	250 ⁴	350	250	4.00	4.80
	315 ⁴	415	250	4.50	5.30
500	125 ⁴	225	270	3.00	3.80
	160 ⁴	266	275	3.30	4.10
	200 ⁴	300	275	3.80	4.60
	250	350	275	4.4	5.2
	315	415	275	5.0	5.8
400	500	275	6.3	7.6	

Ød ₁ (mm)	Ød ₂ /Ød ₄ (mm)	L (mm)	H (mm)	Weight (kg)	
				TPC	XPC
560	200	360	305	4.3	5.7
	250	400	305	4.8	6.3
	315	485	305	5.6	7.2
	400	590	305	6.9	9.3
600	200	360	325	4.5	6.1
	250	400	325	4.9	6.7
	315	485	325	5.9	7.6
630	400	590	325	7.3	9.8
	200	360	340	4.8	6.4
	250	400	340	5.4	7.0
710	315	485	340	6.3	8.2
	400	590	340	7.7	10.2
	160 ⁴	430	415	5.5	6.0
800	200 ⁴	470	415	6.0	6.3
	250 ⁴	520	415	6.6	6.7
	315 ⁴	585	435	7.5	8.0
	400 ⁴	670	435	8.5	9.6
	450 ⁴	720	475	9.4	10.9
800	160 ⁴	430	460	6.2	6.8
	200 ⁴	470	460	6.8	7.5
	250 ⁴	520	460	7.4	8.0
	315 ⁴	585	480	8.4	9.3
	400 ⁴	670	480	9.5	10.5
	450 ⁴	720	520	10.5	11.6
500 ⁴	770	520	11.2	12.0	
560 ⁴	830	520	11.9	13.1	

Pressed T-pieces and X-pieces

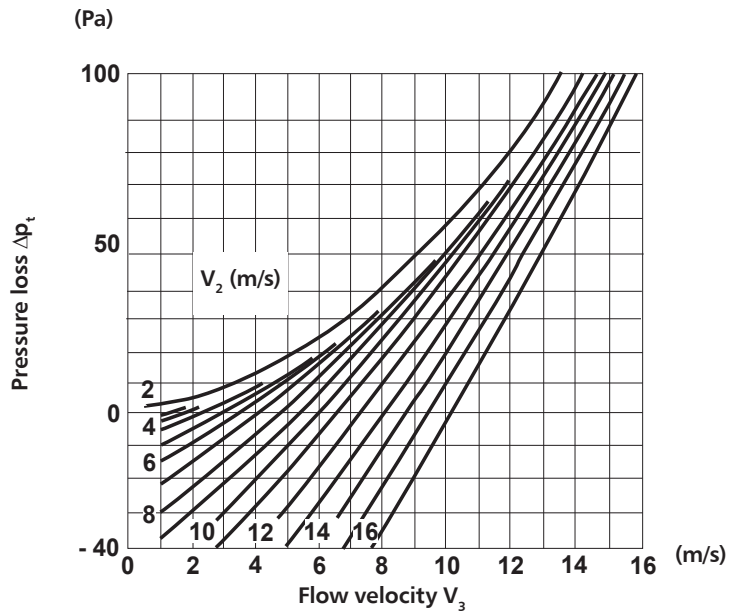
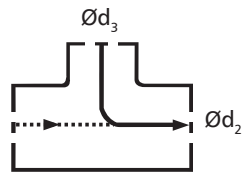
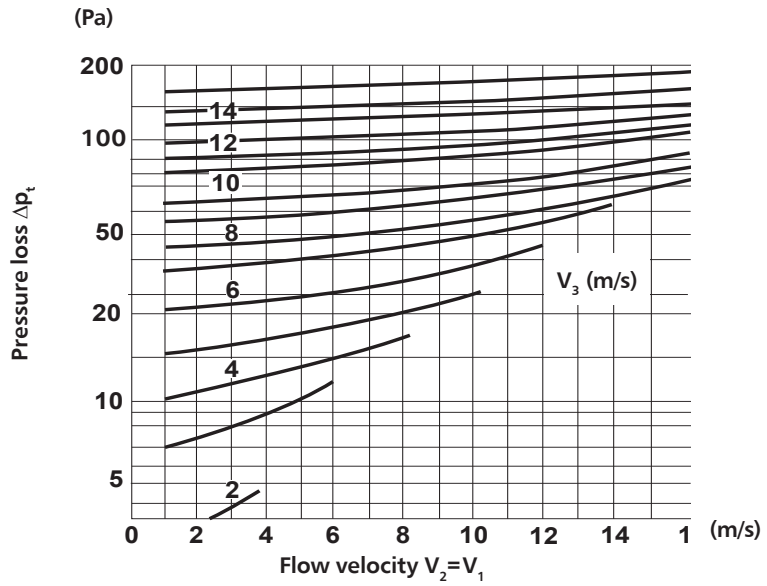
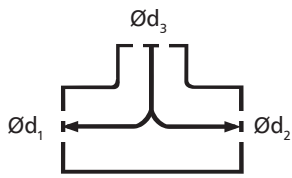
Technical specifications



- V_1 – average flow velocity across d_1
- V_2 – average flow velocity across d_2
- V_3 – average flow velocity across d_3

Pressed T-pieces and X-pieces

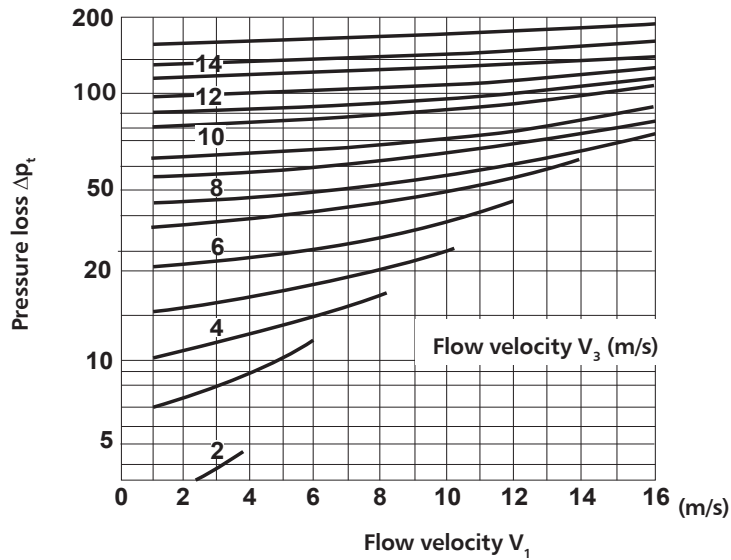
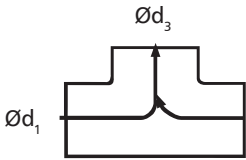
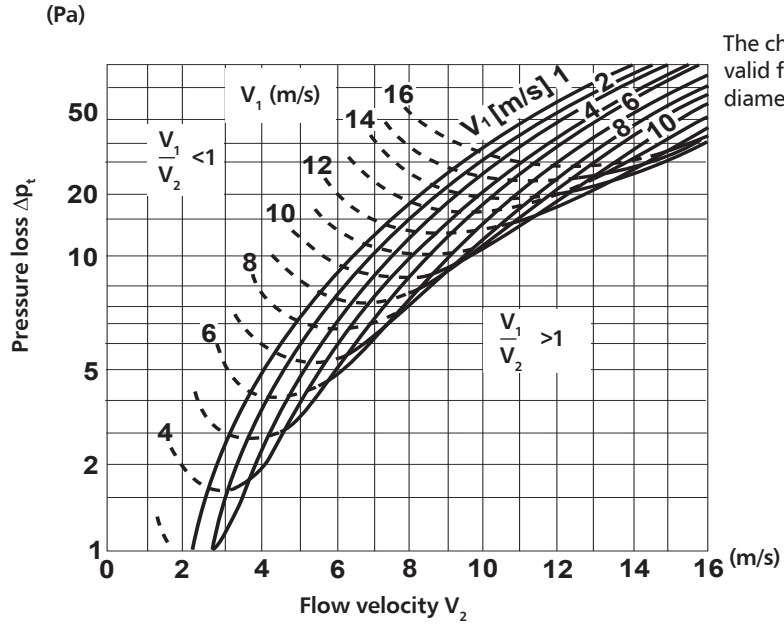
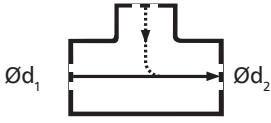
Technical specifications



V_1 – average flow velocity across d_1
 V_2 – average flow velocity across d_2
 V_3 – average flow velocity across d_3

Pressed T-pieces and X-pieces

Technical specifications



- V_1 – average flow velocity across d_1
- V_2 – average flow velocity across d_2
- V_3 – average flow velocity across d_3