

Filter boxes



Description

The duct filters are designed for filtering air flowing through round ducts in the standard diameter range of 100-500 mm.

The duct filter casing is a galvanized steel sheet box with a top closure fastened with clasps. The box features connectors with EPDM gaskets. The dedicated design of the duct filters allows easy replacement of the filter element.

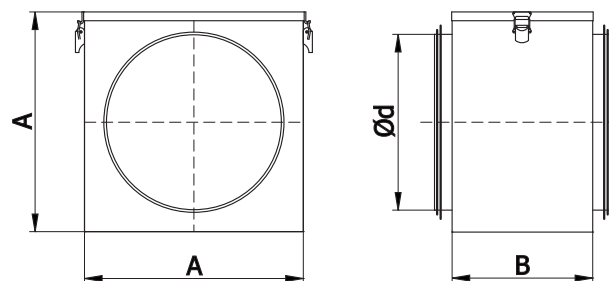
The duct filters can be provided with class EU3 and EU5 filter elements. Optional filter elements include the framed filter elements and the pleated filter elements provided with a filter element mat protected with a galvanized steel wire mesh.

The duct filters can be manufactured on request with the UC4 activated carbon filter elements.

Available materials

- galvanized steel sheet
- 1.4301/304 stainless steel

Dimensions



Type	Ød [mm]	AxA [mm]	B [mm]
FSBQL-100	100	160	160
FSBQL-125	125	180	160
FSBQL-150	150	210	160
FSBQL-160	160	210	160
FSBQL-200	200	250	160
FSBQL-250	250	300	160
FSBQL-315	315	360	160
FSBQL-355	355	400	160
FSBQL-400	400	450	160
FSBQL-450	450	500	160
FSBQL-500	500	550	160

Technical specifications

Pressure loss chart

